

**FUJIFILM**  
Value from Innovation



# FC1

Ultrasound Diagnostic Imaging System

**FC1** step into the future



## Moving into a new era for ultrasound diagnostics.

With a proven track record in medical imaging, FUJIFILM has partnered with SonoSite, an innovator and world leader in bedside ultrasound, to bring you more possibilities in ultrasound diagnosis.

The FC1 system offers you advanced image processing, a compact design, and expandable features that can grow with your practice.



## HIGH-DEFINITION IMAGING

### Advanced image processing



#### MPU processor

FC1's powerful, 512-core image processing MPU reduces noise for high-quality tissue images.



#### Speed of sound correction

Speed of sound corrections can be performed on elemental data for better image resolution by tissue type.



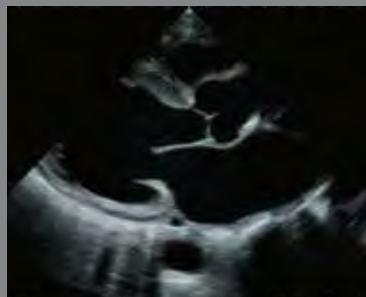
#### Speckle reduction (SRI) technology

The system leverages FUJIFILM's proprietary Image Intelligence technology to suppress speckles for improved contrast resolution.

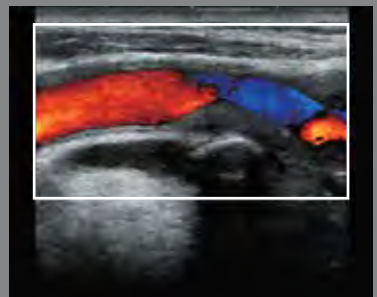
### Optimized for a broad number of applications



Abdomen



Cardiac



Carotid Artery



# FLEXIBLE

## Hybrid User Control

The combination of a large touchscreen with persistent keys for routine functions allows the FC1 system to adapt to your clinical needs. Select the 2D button to perform a basic scan, or leverage the touchscreen to navigate through more complex measurements and calculations.

## Programmable Buttons

Four easy-to-locate function keys can be quickly programmed to be the most common functions you need today and in the future.

## User-Defined Exam Presets

Develop your own exam presets for each transducer. The FC1 system provides you with several options to create and adjust exam presets. Once you've found the right combination for you, set it as the default.

## Image Optimization

The auto-image button adapts to different body habitus to enable high-quality images with a push of a button.

## Transducers are backed by a technology-driven, 5-year warranty

SonoSite-manufactured transducers are subject to rigorous testing standards, including a 3 foot (91.4 cm) drop test. The proprietary design offers excellent durability and reliability.

The 5-year warranty offers you peace of mind.





# MOBILE

## Light and compact

The lightweight, compact design combines mobility with a large display for easy image viewing.



12.1 inch monitor with a full screen display

## Integrated handle

The large, integrated handle distributes system weight to simplify transport.

## Rapid Boot-up Time

System startup in approximately 30 seconds from a fully powered-off state.

## FC Series Stand



- FC1 main unit can be attached/detached with a one touch operation.
- Display stand can be raised or lowered.
- Black and white printer (option)

## Specification

### ■ Main Unit

Name	FUJIFILM FC1 "Ultrasound Diagnostic Imaging System"
Monitor	12.1 inch LCD
Scanning method	Linear scanning/convex scanning/sector scanning
Power supply	AC 100 - 240V, 50 - 60Hz, 2.5A - 1.2A maximum
Display mode	B-mode, M-mode, color Doppler, power Doppler, PW mode, CW mode
Option	DICOM software, B&W printer, USB memory stick, barcode reader, FC series stand, TTC unit, footswitch, ECG set, TDI (PW) software, Steep Needle Profiling software

### ■ Transducers



**C60xf**  
Applications:  
abdominal, ob, ob-twin,  
gynecology, fetal heart, msk,  
nerve, pediatric, vascular,  
urology  
5-2 MHz Curved  
Scan depth: 29 cm



**C35xp**  
Applications;  
abdominal, ob, gynecology,  
msk, nerve, pediatric,  
neonatal, vascular, small  
parts, urology  
8-3 MHz Curved  
Scan depth: 18 cm



**C11xp**  
Applications:  
abdominal, gynecology,  
cardiac, pediatric heart,  
nerve, pediatric, neonatal,  
vascular, arterial, venous,  
small parts  
8-5 MHz Curved  
Scan depth: 14 cm



**ICTxp**  
Applications:  
ob, gynecology  
9-5 MHz Curved  
Scan depth: 14 cm



**HFL50xp**  
Applications:  
abdominal, small parts,  
thyroid, breast, vascular,  
carotid, arterial, venous, msk,  
pediatric, nerve, neonatal,  
urology  
15-6 MHz Linear  
Scan depth: 8 cm



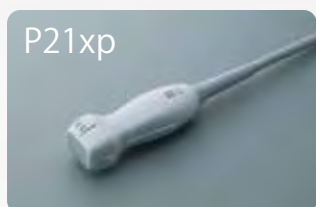
**HFL38xp**  
Applications:  
abdominal, small parts,  
thyroid, breast, vascular,  
carotid, arterial, venous, msk,  
pediatric, nerve, urology  
13-6 MHz Linear  
Scan depth: 8 cm



**L38xp**  
Applications:  
abdominal, small parts,  
thyroid, breast, vascular,  
carotid, arterial, venous, msk,  
pediatric, nerve, urology  
10-5 MHz Linear  
Scan depth: 9 cm



**L25xp**  
Applications:  
abdominal, small parts,  
thyroid, breast, vascular,  
carotid, arterial, venous, msk,  
pediatric, nerve, neonatal,  
urology  
13-6 MHz Linear  
Scan depth: 6 cm



**P21xp**  
Applications:  
cardiac, pediatric heart,  
abdominal, ob, ob-twin, fetal  
heart, gynecology, vascular  
5-1 MHz Phased  
Scan depth: 29 cm

\*As design enhancements are made to these models, the external appearance and specifications may change without prior notice.

\*Read the operating manual specific to this product for details on its use.

\*Please contact our company for information on detailed product specifications.